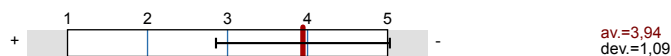


tu ETIT_WS2425_Vorlesung_english 15.04.2025-12:55
No. of responses = 131

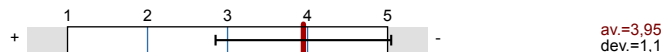
Overall indicators

Global Index

2. Questions considering the lecture - Part A



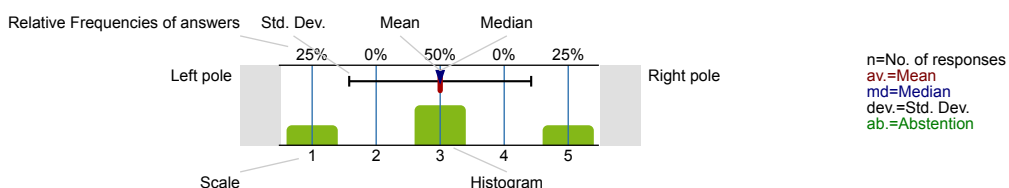
4. Questions considering the tutorial - Part A



Survey Results

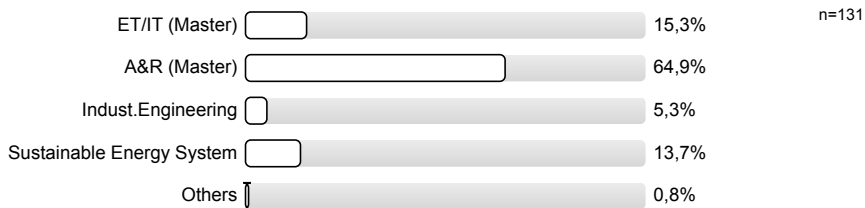
Legend

Question text

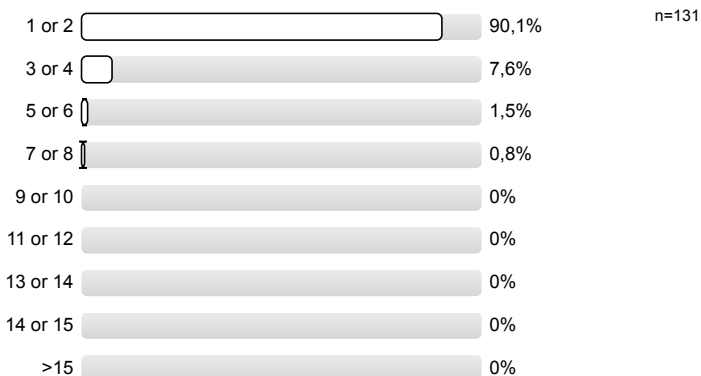


1. Information considering the course of studies

1.1) Field of study:

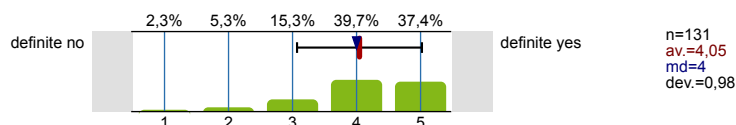


1.2) Study term:



2. Questions considering the lecture - Part A

2.1) The lecture was clearly structured and followed a common thread.

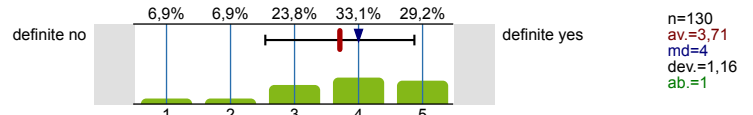


| | | | | |
|--|--|-------------|--------------|---|
| 2.2) The course was in terms of content and organization well prepared. | | definite no | definite yes | n=131 av.=3,98 md=4 dev.=1,05 |
| 2.3) The lecturer explained the lecture contents linguistically clear and distinct. | | definite no | definite yes | n=128 av.=3,85 md=4 dev.=1,07 ab.=2 |
| 2.4) The format of the presentation (blackboard, slide presentation, media, etc.) was good. | | definite no | definite yes | n=131 av.=3,91 md=4 dev.=1,1 |
| 2.5) Supplemental digital content (scripts, videos, quizzes, etc.) was appropriate. | | definite no | definite yes | n=129 av.=3,82 md=4 dev.=1,13 ab.=2 |
| 2.6) The lecturer encouraged asking questions and used digital formats where appropriate to stimulate interactions (e.g., surveys, chats). | | definite no | definite yes | n=128 av.=4,09 md=4 dev.=1,02 ab.=3 |
| 2.7) Lecture notes and learning materials (recommended reading, digital recordings, etc.) were appropriate. | | definite no | definite yes | n=127 av.=3,84 md=4 dev.=1,19 ab.=4 |

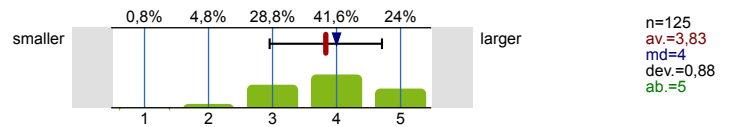
3. Question considering the lecture - Part B

| | | | | |
|--|--|-------------|--------------|---|
| 3.1) How often did you attend lectures or, if available, use additional digital recordings provided? | | <10% | >90% | n=131 av.=4,15 md=4 dev.=0,97 |
| 3.2) My existing knowledge was sufficient to follow the lecture. (If not, please check "Comments and suggestions" provide detailed guidance). | | definite no | definite yes | n=129 av.=3,57 md=4 dev.=1,14 ab.=1 |
| 3.3) The responsible professor/lecturer conducted the lessons usually personally. | | definite no | definite yes | n=120 av.=4,09 md=4 dev.=1,14 ab.=9 |
| 3.4) The lecture was held regularly. | | definite no | definite yes | n=130 av.=4,88 md=5 dev.=0,39 |
| 3.5) The course completely covered the contents announced in the module description. (If not, please provide detailed information under "Comments and Suggestions"). | | definite no | definite yes | n=124 av.=4,53 md=5 dev.=0,75 ab.=7 |
| 3.6) The boundary conditions of the course (logistics, equipment, event times) are satisfactory. | | definite no | definite yes | n=125 av.=4,14 md=4 dev.=0,94 ab.=4 |

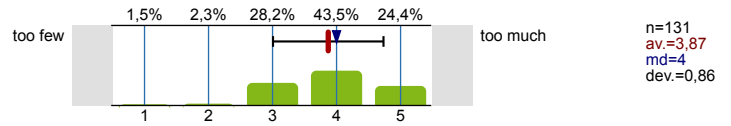
3.7) The pace of the lecture is appropriate. (If not, please provide detailed instructions in "Comments and Suggestions").



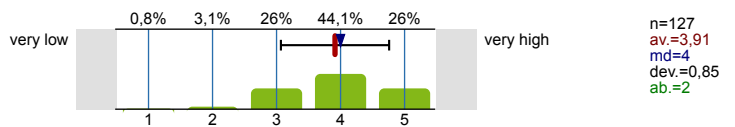
3.8) The actual workload in the area of self-study corresponds to the specification in the module description.



3.9) The amount of information being taught in this lecture was...

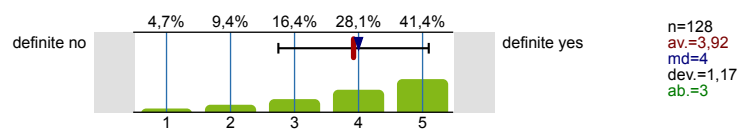


3.10) Compared to other classes, the time effort for this one (incl. preparation, additional reading and assignments) was...

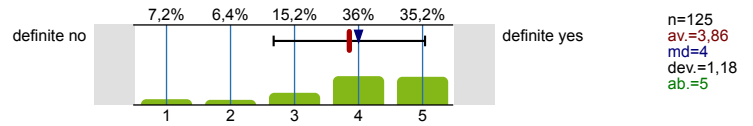


4. Questions considering the tutorial - Part A

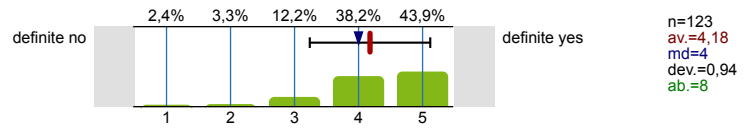
4.1) The exercises were well aligned with the lecture.



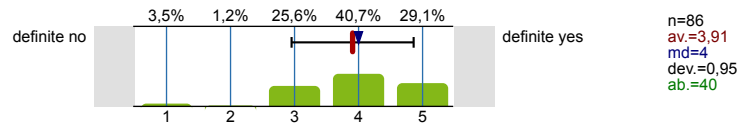
4.2) The tutor showed good capabilities to explain the problems.



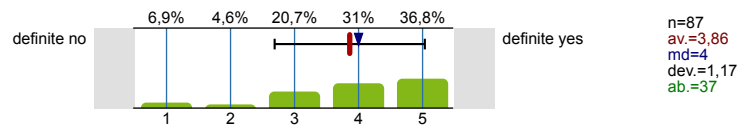
4.3) Questions about the lecture/exercise were answered.



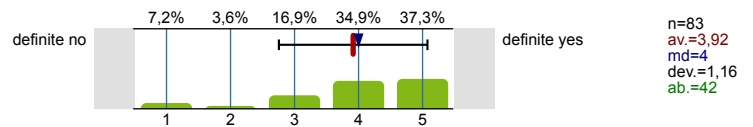
4.4) The experiment / experiments fit well with the lecture.



4.5) The technical equipment of the experiments is appropriate (If not, please write under "Comments and suggestions" Suggestions for improvement note).

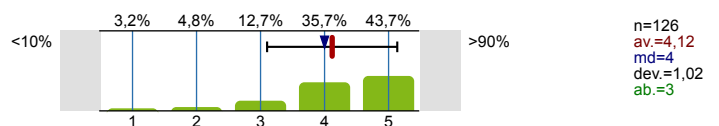


4.6) The supervision of the experiment was carried out by competent employees.

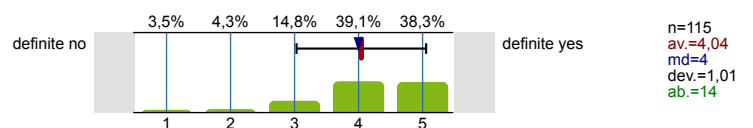


5. Questions considering the tutorial - Part B

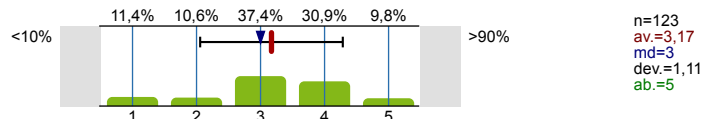
5.1) How often have you visited the exercise and/or used supplementary digital offerings?



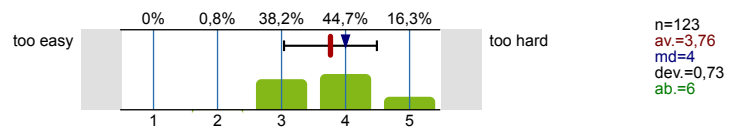
5.2) The size of the exercise or seminar group was appropriate.



5.3) I was able to solve ...% of the exercises independently.

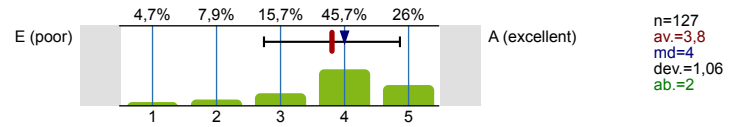


5.4) The practice exercises were...

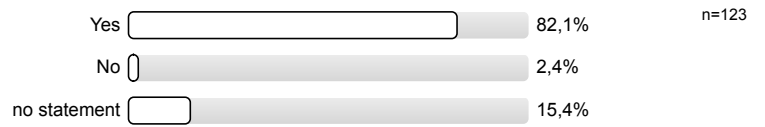


6. Overall assessment, Comments and Suggestions

6.1) Overall, I rate the lecture and exercise with the grade:



6.4) Was an appropriate time frame provided in the lecture to answer the questionnaire?

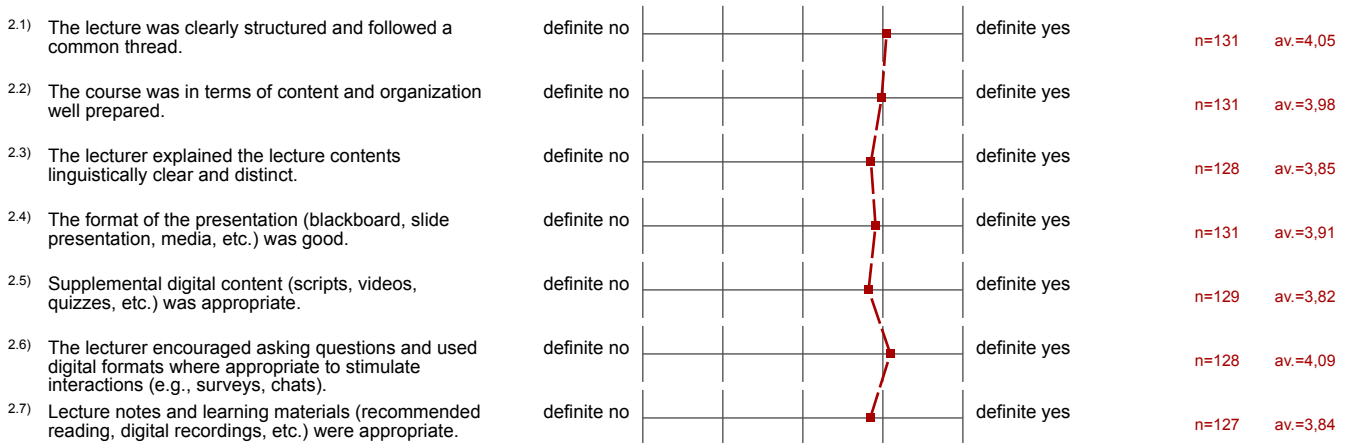


Profile

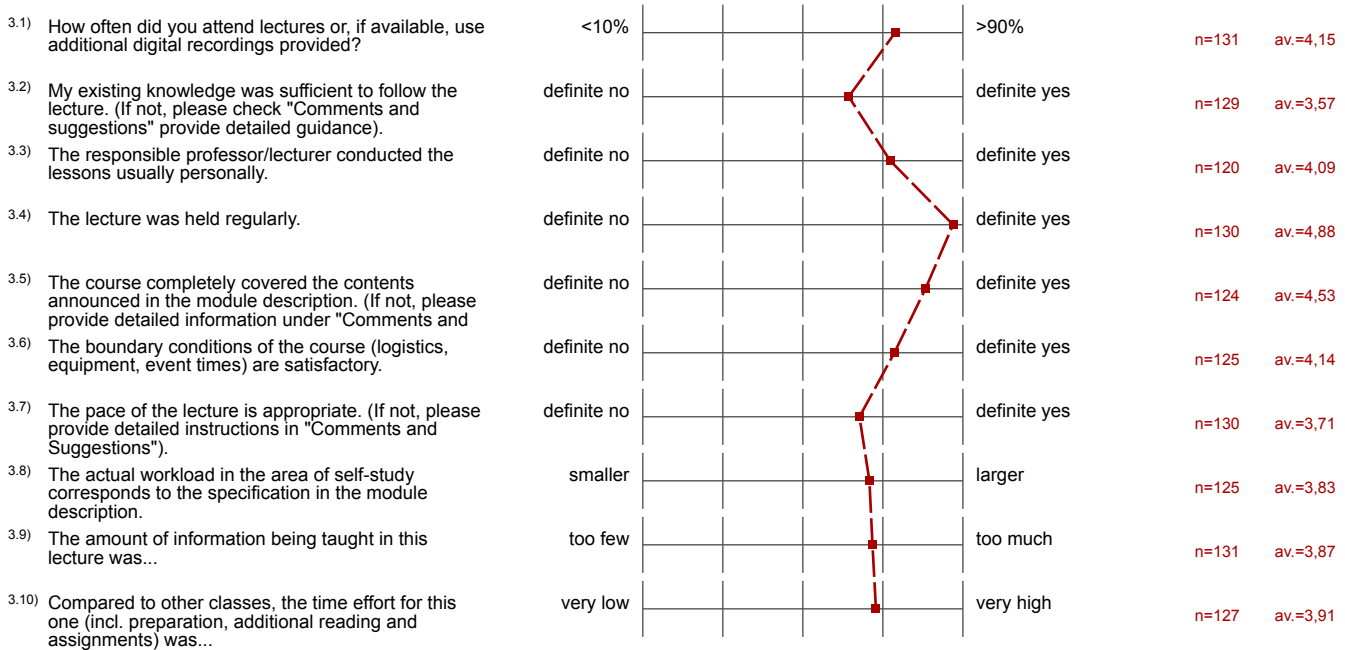
Compilation: ETIT_WS2425_Vorlesung_englisch 15.04.2025-12:55

Values used in the profile line: Mean

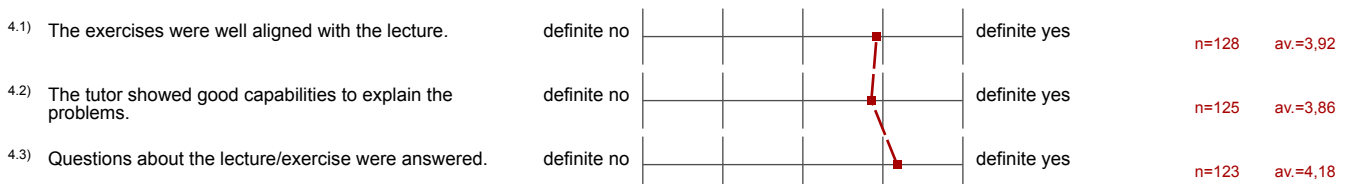
2. Questions considering the lecture - Part A






3. Question considering the lecture - Part B







4. Questions considering the tutorial - Part A



| | | | | | |
|---|-------------|--|--------------|------|----------|
| 4.4) The experiment / experiments fit well with the lecture. | definite no |  | definite yes | n=86 | av.=3,91 |
| 4.5) The technical equipment of the experiments is appropriate (If not, please write under "Comments and suggestions" Suggestions for improvement | definite no |  | definite yes | n=87 | av.=3,86 |
| 4.6) The supervision of the experiment was carried out by competent employees. | definite no |  | definite yes | n=83 | av.=3,92 |

5. Questions considering the tutorial - Part B

| | | | | | |
|---|-------------|--|--------------|-------|----------|
| 5.1) How often have you visited the exercise and/or used supplementary digital offerings? | <10% |  | >90% | n=126 | av.=4,12 |
| 5.2) The size of the exercise or seminar group was appropriate. | definite no |  | definite yes | n=115 | av.=4,04 |
| 5.3) I was able to solve ...% of the exercises independently. | <10% |  | >90% | n=123 | av.=3,17 |
| 5.4) The practice exercises were... | too easy |  | too hard | n=123 | av.=3,76 |

6. Overall assessment, Comments and Suggestions

| | | | | | |
|---|----------|--|---------------|-------|---------|
| 6.1) Overall, I rate the lecture and exercise with the grade: | E (poor) |  | A (excellent) | n=127 | av.=3,8 |
|---|----------|--|---------------|-------|---------|