



TB-Bericht 1 16.07.2023-19:10

No. of responses = 82

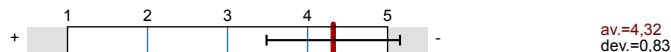
Overall indicators

Global Index

2. Questions considering the lecture - Part A



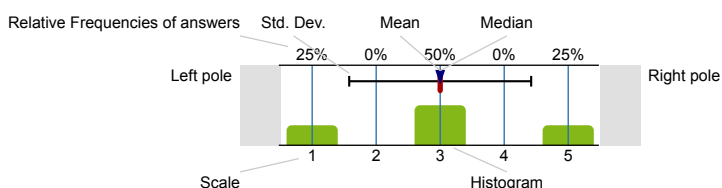
4. Questions considering the tutorial - Part A



Survey Results

Legend

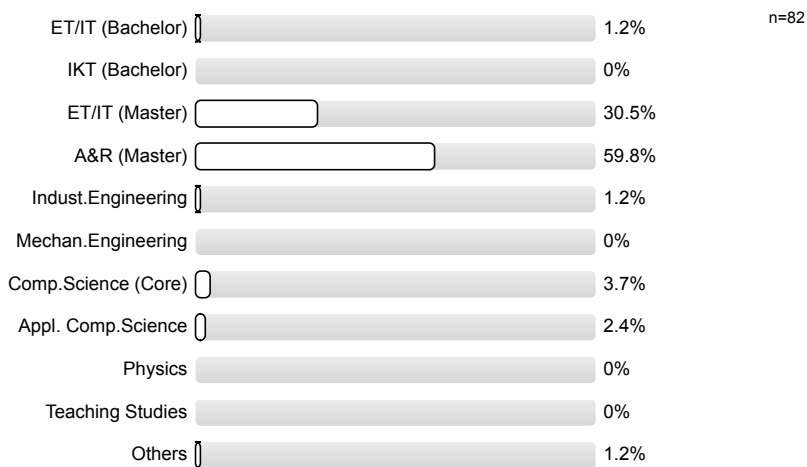
Question text



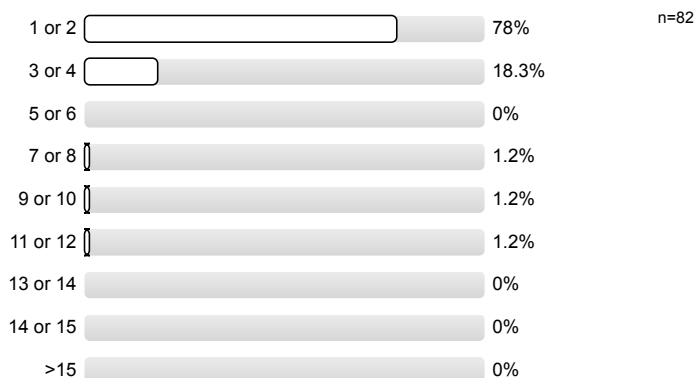
n=No. of responses
av.=Mean
md=Median
dev.=Std. Dev.
ab.=Abstention

1. Information considering the course of studies

1.1) Field of study:

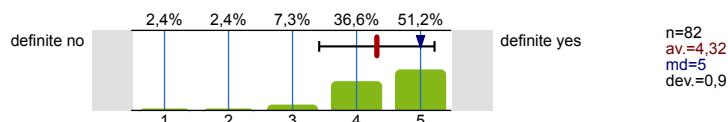


1.2) Study term:

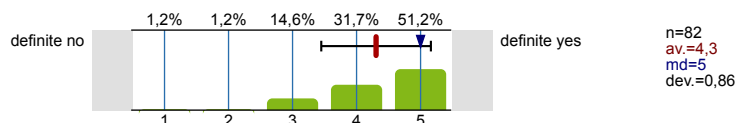


2. Questions considering the lecture - Part A

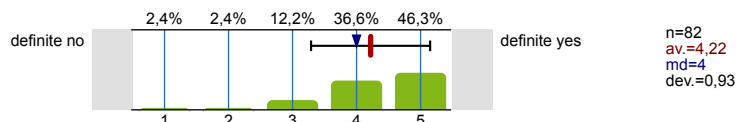
2.1) The lecture was clearly structured and followed a common thread.



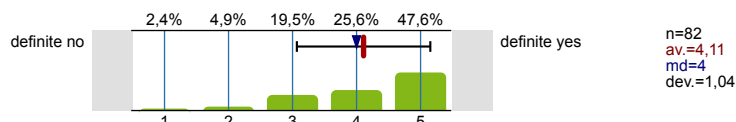
2.2) The course was in terms of content and organization well prepared.



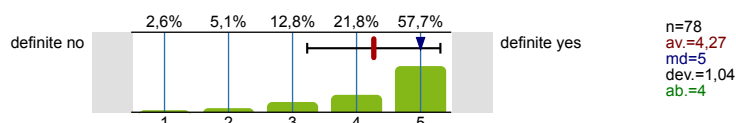
2.3) The lecturer explained the lecture contents linguistically clear and distinct.



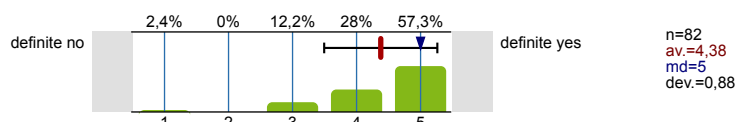
2.4) The format of the presentation (blackboard, slide presentation, media, etc.) was good.



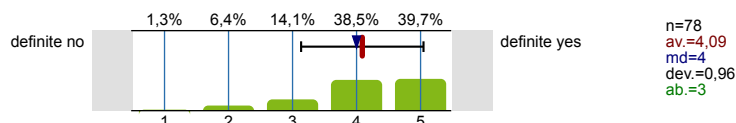
2.5) Supplemental digital content (scripts, videos, quizzes, etc.) was appropriate.



2.6) The lecturer encouraged asking questions and used digital formats where appropriate to stimulate interactions (e.g., surveys, chats).

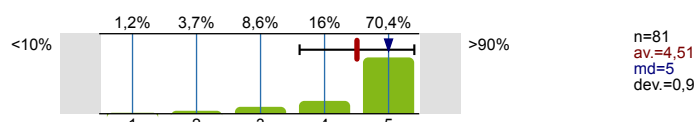


2.7) Lecture notes and learning materials (recommended reading, digital recordings, etc.) were appropriate.

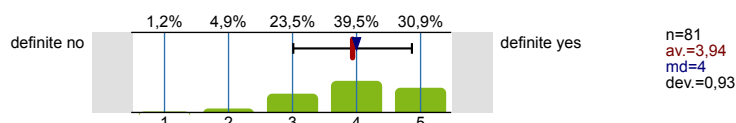


3. Question considering the lecture - Part B

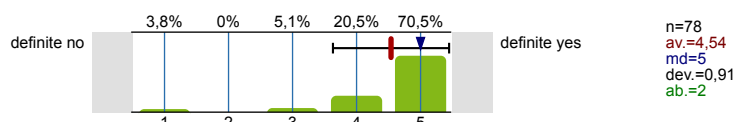
3.1) How often did you attend lectures or, if available, use additional digital recordings provided?



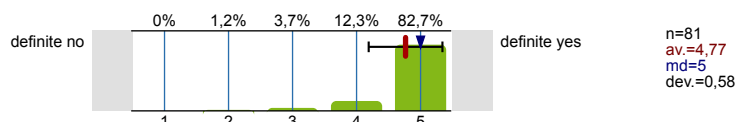
3.2) My existing knowledge was sufficient to follow the lecture. (If not, please check "Comments and suggestions" provide detailed guidance).



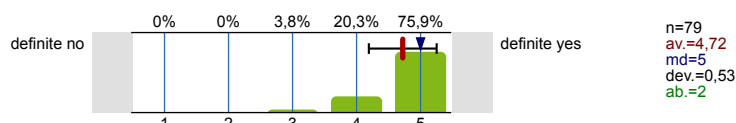
3.3) The responsible professor/lecturer conducted the lessons usually personally.



3.4) The lecture was held regularly.



3.5) The course completely covered the contents announced in the module description. (If not, please provide detailed information under "Comments and Suggestions").



3.6)	The boundary conditions of the course (logistics, equipment, event times) are satisfactory.		definite no	definite yes	n=78 av.=4,37 md=5 dev.=0,84 ab.=2
3.7)	The pace of the lecture is appropriate. (If not, please provide detailed instructions in "Comments and Suggestions").		definite no	definite yes	n=79 av.=4,27 md=5 dev.=0,97 ab.=2
3.8)	The actual workload in the area of self-study corresponds to the specification in the module description.		smaller	larger	n=79 av.=3,77 md=4 dev.=0,77 ab.=1
3.9)	The amount of information being taught in this lecture was...		too few	too much	n=80 av.=3,73 md=4 dev.=0,76 ab.=1
3.10)	Compared to other classes, the time effort for this one (incl. preparation, additional reading and assignments) was...		very low	very high	n=81 av.=3,89 md=4 dev.=0,81

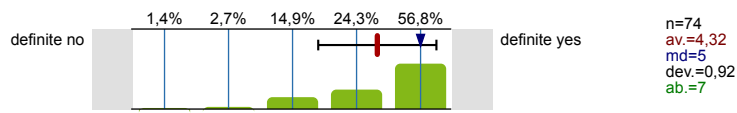
4. Questions considering the tutorial - Part A

4.1)	The exercises were well aligned with the lecture.		definite no	definite yes	n=80 av.=4,21 md=4 dev.=0,96 ab.=1
4.2)	The tutor showed good capabilities to explain the problems.		definite no	definite yes	n=80 av.=4,29 md=4,5 dev.=0,87 ab.=1
4.3)	Questions about the lecture/exercise were answered.		definite no	definite yes	n=77 av.=4,51 md=5 dev.=0,72 ab.=3
4.4)	The experiment / experiments fit well with the lecture.		definite no	definite yes	n=58 av.=4,19 md=4 dev.=0,8 ab.=18
4.5)	The technical equipment of the experiments is appropriate (If not, please write under "Comments and suggestions" Suggestions for improvement note).		definite no	definite yes	n=60 av.=4,23 md=4 dev.=0,89 ab.=17
4.6)	The supervision of the experiment was carried out by competent employees.		definite no	definite yes	n=59 av.=4,49 md=5 dev.=0,75 ab.=18

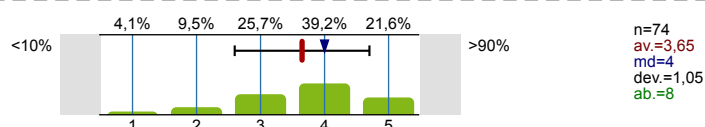
5. Questions considering the tutorial - Part B

5.1)	How often have you visited the exercise and/or used supplementary digital offerings?		<10%	>90%	n=78 av.=4,24 md=5 dev.=1,01 ab.=3
------	--	--	------	------	--

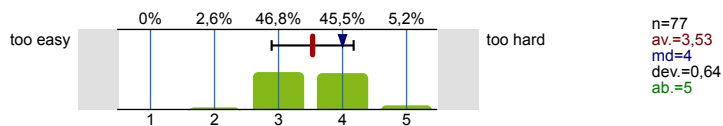
5.2) The size of the exercise or seminar group was appropriate.



5.3) I was able to solve ...% of the exercises independently.

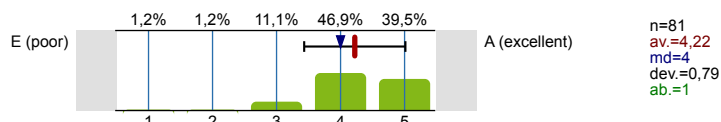


5.4) The practice exercises were...



6. Overall assessment, Comments and Suggestions

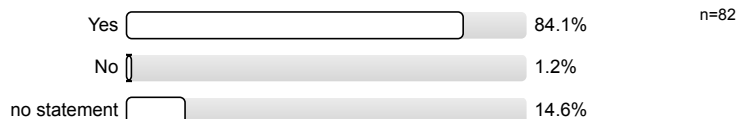
6.1) Overall, I rate the lecture and exercise with the grade:



6.4) Should the survey also be conducted digitally in the future?



6.5) Was an appropriate time frame provided in the lecture to answer the questionnaire?

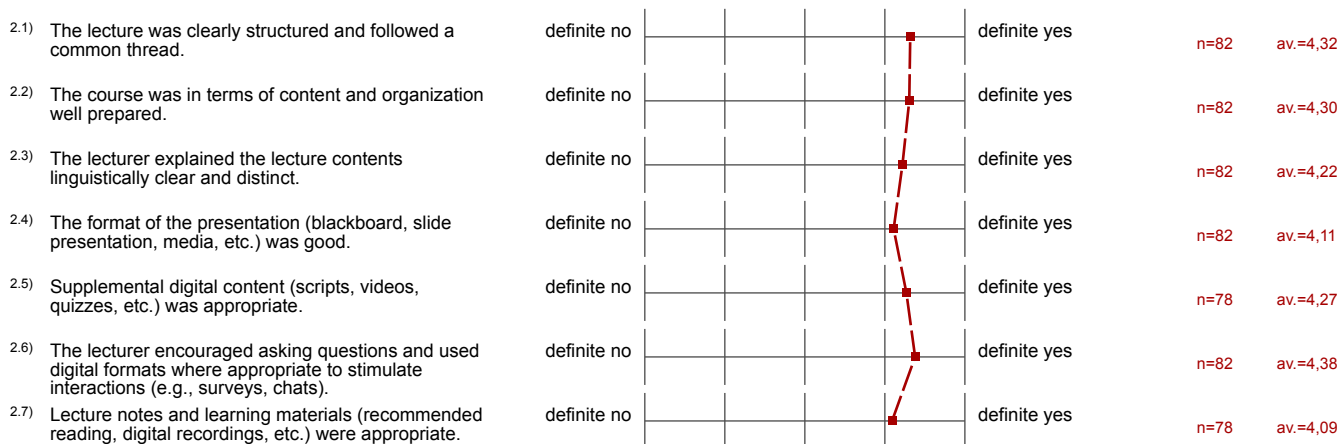


Profile

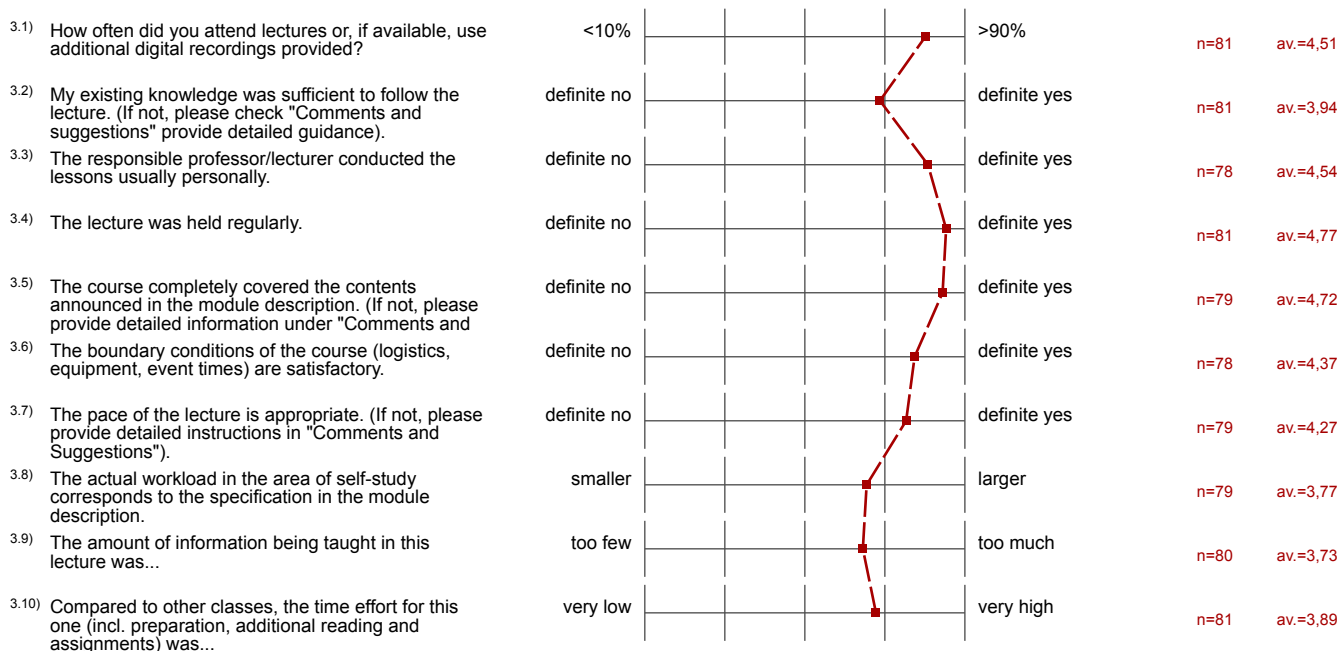
Compilation: TB-Bericht 1 16.07.2023-19:10

Values used in the profile line: Mean

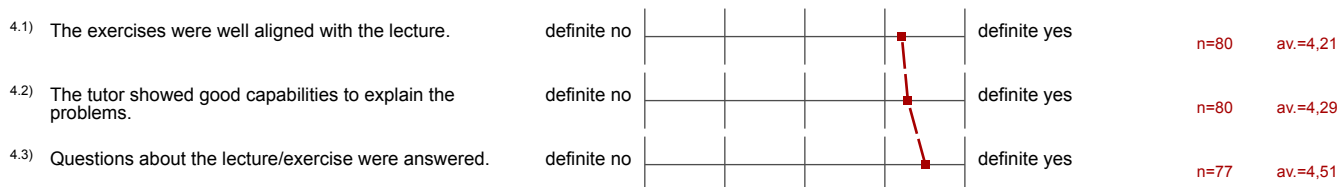
2. Questions considering the lecture - Part A



3. Question considering the lecture - Part B



4. Questions considering the tutorial - Part A



4.4) The experiment / experiments fit well with the lecture.	definite no		definite yes	n=58	av.=4,19
4.5) The technical equipment of the experiments is appropriate (If not, please write under "Comments and suggestions" Suggestions for improvement	definite no		definite yes	n=60	av.=4,23
4.6) The supervision of the experiment was carried out by competent employees.	definite no		definite yes	n=59	av.=4,49

5. Questions considering the tutorial - Part B

5.1) How often have you visited the exercise and/or used supplementary digital offerings?	<10%		>90%	n=78	av.=4,24
5.2) The size of the exercise or seminar group was appropriate.	definite no		definite yes	n=74	av.=4,32
5.3) I was able to solve ...% of the exercises independently.	<10%		>90%	n=74	av.=3,65
5.4) The practice exercises were...	too easy		too hard	n=77	av.=3,53

6. Overall assessment, Comments and Suggestions

6.1) Overall, I rate the lecture and exercise with the grade:	E (poor)		A (excellent)	n=81	av.=4,22
---	----------	--	---------------	------	----------